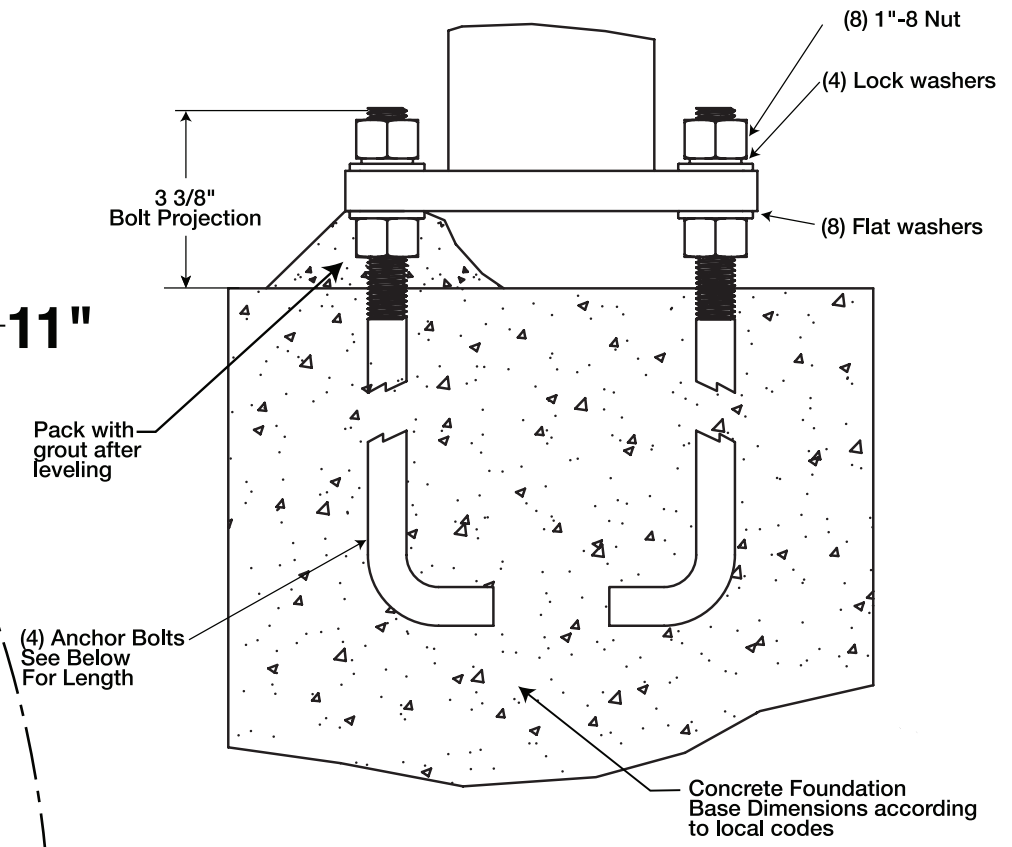
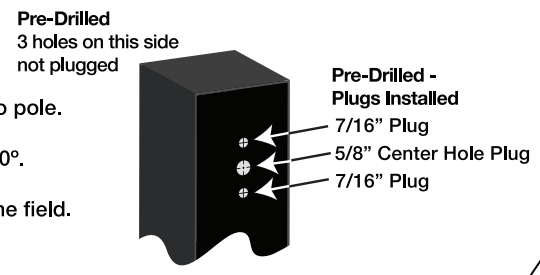


- Verify bolt circle diameter and anchor bolt projection.
- Use anchor bolt template to assure accuracy.
- Drill holes in plywood and use as a locator for anchor bolts.

- Notes:**
- Hand Hole Covers are attached to pole.
  - Drilled (non Tenon) Poles come pre-drilled for 2 Area Lights at 180°.
- Additional drilling can be done in the field.



**ABK5 with 36" Anchor Bolts Fits poles listed below**

- PS5-07-20D2
- PS5-07-20WT
- PS5-07-25D2
- PS5-07-25WT
- PS5-07-30D2
- PS5-07-30WT

**Anchor Bolt Kit - for Mason**

- (4) 1" x 36" anchor bolts each assembled with
  - (2) Hex nuts,
  - (2) Flat washers
  - (1) Lock washer
- (1) Paper anchor bolt template

**Base Cover Kit - for Electrician**

- (1) 2pc Steel base cover, bronze
- (4) 1/4" - 20 Black base cover screws
- (1) 4" Pole cap CAT# PCAP4 (For Use with Drilled Poles)