
USER GUIDE

NOTE:

Please read the entire manual to fully understand and safely use this product.

The products can be used at the voltage of 100-277V AC, 50/60HZ, suitable for indoor dry environment.

Specifications are subject to change without notice.

UNPACKING

- 1) Unpack and carefully examine the product.
- 2) Report any damage and save all packing materials if any parts were damaged during shipping.
- 3) Do not attempt to use this apparatus if it is damaged.

INSTALLATION INSTRUCTIONS

- 1) CONSULT A QUALIFIED ELECTRICIAN TO ENSURE CORRECT BRANCH CIRCUIT CONDUCTOR.
- 2) The product should be installed and operated by a qualified electrician or technician in accordance with relevant local codes.
- 3) Risk of electric shock. Ensure that the main power source is off when wiring or soldering the sections of the product.

MAINTENANCE

- 1) Prior to cleaning the product, make sure it has been disconnected from the power supply.
- 2) Use a dry or slightly moistened cloth for cleaning.
- 3) Never use any chemicals or abrasive materials for cleaning.

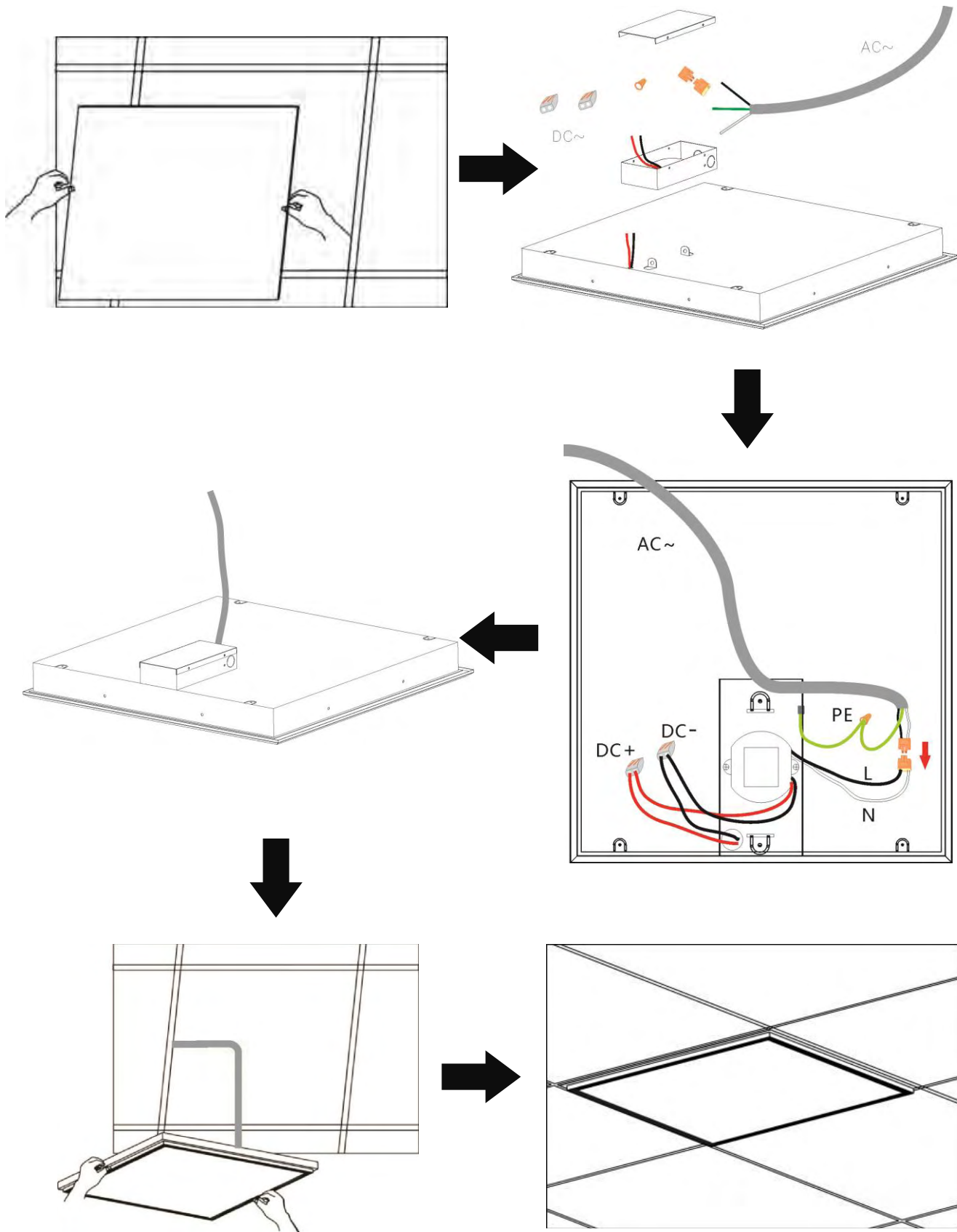
INSTALLATION CONSIDERATIONS

- 1) The product must be at a minimum distance of 0.2 m from ANY FLAMMABLE MATERIALS.
- 2) The product must not be installed into ceilings or walls that contain heat-insulating materials.

INSTALLATION STEPS

1. Built-in

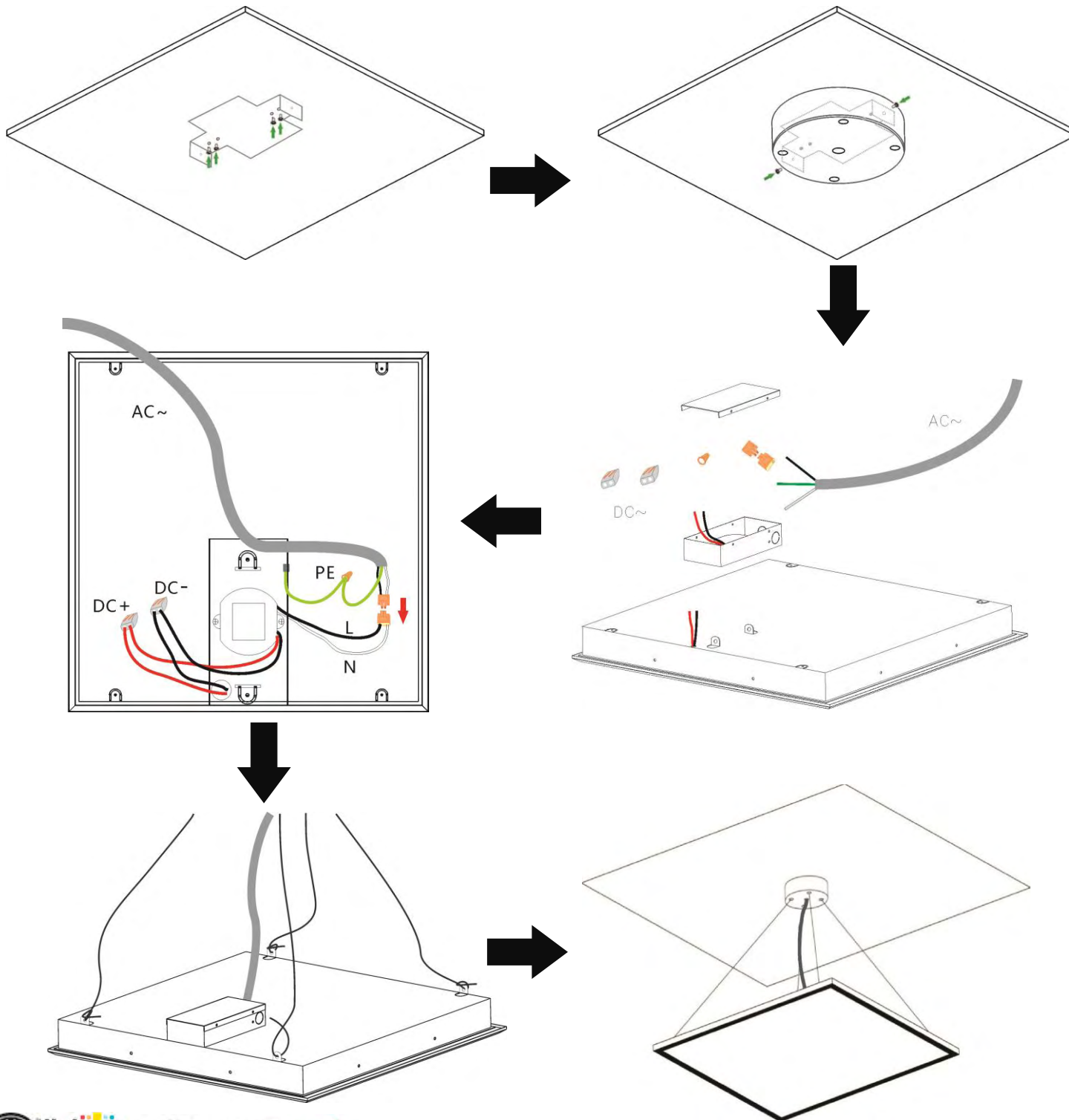
- 1) Turn off main power before installation.
- 2) Remove the ceiling panel.
- 3) Mount the driver box to the back of the ECO Panel.
- 4) Connect the input and ground wires (bare end) of the driver box to the main power outlet.
- 5) Connect the ECO Panel to the corresponding connectors on the output wires of the driver box.
- 6) Fix the ECO Panel into the ceiling.



2. Suspended

Accessories for suspended installation are available at an extra charge.

- 1) Turn off the main power before installation.
- 2) Fix the suspended box to the ceiling with screws.
- 3) Mount the driver box to the back of the ECO Panel.
- 4) Connect the ECO Panel to the corresponding connectors on the output wires of the driver.
- 5) Connect the input and ground wires (bare end) of the driver to the main power outlet.
- 6) Fasten the suspended cables to the hooks of the ECO Panel.



3. Surface Mount

Mounting box is available at an extra charge.

- 1) Turn off the main power before installation.
- 2) Fix the mounting box to the ceiling with screws.
- 3) Mount the driver box to the back of the ECO Panel.
- 4) Connect the input and ground wires (bare end) of the driver box to the main power outlet.
- 5) Connect the ECO Panel to the corresponding connectors on the output wires of the driver box.
- 6) Fix the ECO Panel to the mounting box with screws from sideways.

