

JOB NAME: _____

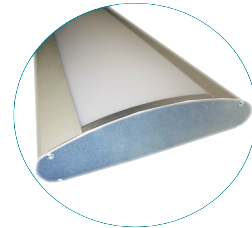
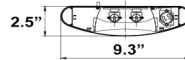
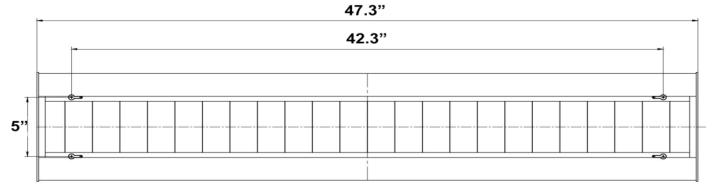
DATE: _____

TYPE: _____



DIMENSIONS:

2.5"(H) x 9.3"(W) x 47.3"(L)



LPPD4-PML

LED PARABOLIC SUSPENDED LIGHT,120-277V

Ideal for hotel, offices, retail outlets, restaurant, parking garages, storage room, conference room, education facilities and more.

ELECTRICAL SPECIFICATIONS:

- Voltage: 120-277VAC 50/60Hz
- Wattage: 40W
- Power factor: >0.95
- Efficacy: 115LM/W

HOUSING SPECIFICATIONS:

- Anodized aluminum
- Operating temperature: -13°F ~ 115°F
- Lifespan: 100,000 hours
- IP rating: IP20

CERTIFICATIONS: UL, DLC



MODEL	WATTS	VOLTAGE	LUMENS	COLOR TEMP
LPPD4-35K	40W	100~277V AC	4,450 LM	3500K
LPPD4-40K	40W	100~277V AC	4,520 LM	4000K
LPPD4-50K	40W	100~277V AC	4,600 LM	5000K

MODEL	DESCRIPTION
LPPD4-PML	Optional Prismatic Lens Replaces The Parabolic lens Field Installed (Not Included)
LPPD4-CPL	Coupling Bracket (Not Included)

LIGHTING SPECIFICATIONS:

- Dimming: 0~10V dimmable
- Lens: Louver Lens
- Total lumens: 4,600 LM
- Color temperature: 3500K/4000K/5000K
- Color rendering index: >80

WARRANTY: 5 years