

LED Parking Lot Lights

160lm/W



General Description:

The PSLN Parking Lot Light is a perfect fixture for parking lot poles and a perfect replacement for all shoebox style flood light that widely used everywhere.

Construction:

- Stylish low-profile body that minimizes wind load and retains aesthetic pleasing appearance.
- Corrosion resistant polyester powder coat finish, available in custom colors
- Independent driver compartment separated from light engine that optimizing driver lifespan.
- Cast aluminum structure that resists high shock and vibration

Mounting:

- Multiple mounting options are available providing a solution for most outdoor applications like area, roadway, wall mount, flood, building accent and billboard lighting.

Electrical:

- High Power Factor, low THD UL listed driver with 10KV surge protection.
- Universal line voltage input 120-277V, 347/480V optional
- FCC compliant
- 0-10V dimmable optional

Optical:

- IES Type II, Type III, Type IV and Type V distribution patterns
- Optics are interchangeable and easily replaceable
- Optional house side shield/visor
- Full range CCT from 3000K to 5000K

Controls:

- NEMA twist lock photocontrol and receptacle
- Bi-Level occupancy sensor with wireless App control
- Luminaire wireless interlinking

Working Temperature:

- Up to 140F thanks to advanced heatsink design

Warranty:

- 10 years' warranty for complete fixture

Listings:

ETL
FCC
DLC



Ordering Information:

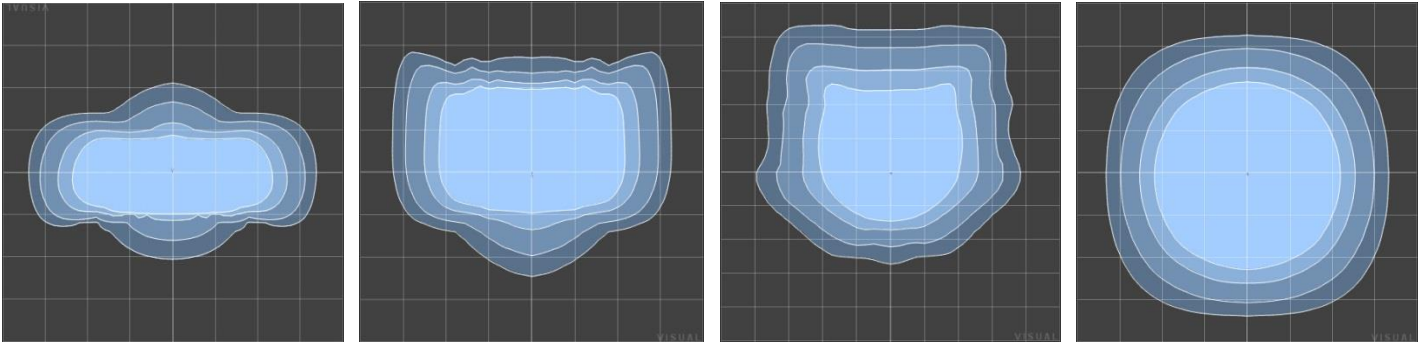
Ordering SKU	Wattage	CCT	Optic	Color	Control	Mounting	Input Voltage
PSLN	50W=50W	50K=5000K	(blank)=Type IV	(blank)=Bronze, Std	(blank)=none, Std	ARM1=Arm mount square pole	(blank)=120-277V, Std
Performance Area Light	80W=80W	40K=4000K	T3=Type III	BL=Black	OCC=Bi-Level Occupancy Sensor	ARM2=Arm mount round pole	HV=347-480V
	100W=100W	30K=3000K	T5=Type V	WH=White	PCN=NEMA Photocell	SF=Slipfitter	
	150W=150W			GR=Gray		WM=Wall Mount	
	200W=200W					TB=Trunnion Bracket	
	240W=240W						
	300W=300W						
	400W=400W						
	500W=500W						

LED Parking Lot Lights

Specs:

Family Model	Wattage	Lumens	lm/W	CCT	CRI
PSLN-50W	50W	8,000lm	160lm/W	3000K-5000K	75+
PSLN-80W	80W	12,000lm	160lm/W	3000K-5000K	75+
PSLN-100W	100W	16,000lm	160lm/W	3000K-5000K	75+
PSLN-120W	120W	19,200lm	160lm/W	3000K-5000K	75+
PSLN-150W	150W	24,000lm	160lm/W	3000K-5000K	75+
PSLN-200W	200W	32,000lm	160lm/W	3000K-5000K	75+
PSLN-300W	300W	48,000lm	160lm/W	3000K-5000K	75+
PSLN-400W	400W	64,000lm	160lm/W	3000K-5000K	75+
PSLN-500W	500W	80,000lm	160lm/W	3000K-5000K	75+

Photometrics:



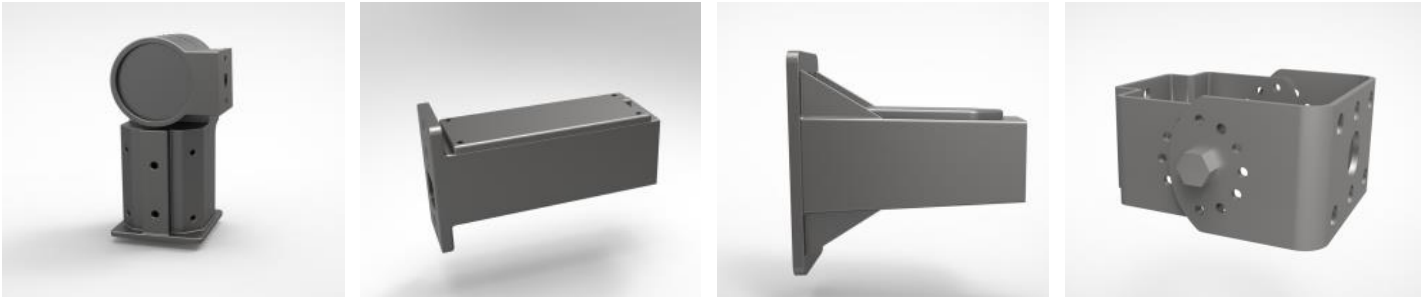
Type II

Type III

Type IV

Type V

Mounting Options:



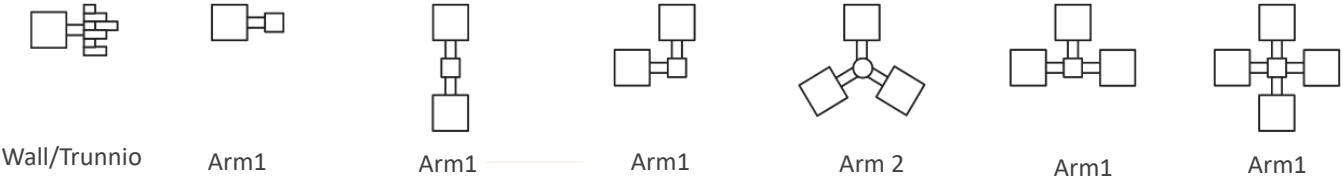
Slipfitter

Arm Mount

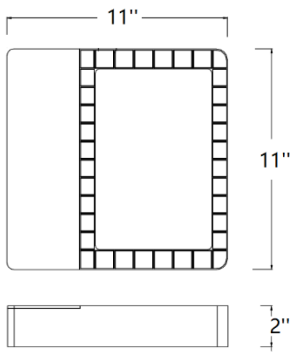
Wall Mount

Trunnion Bracket

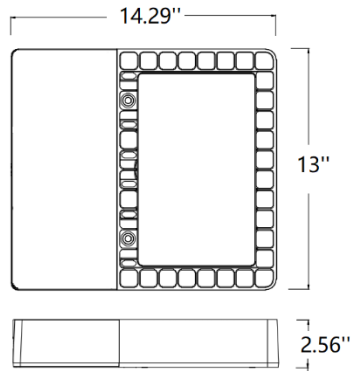
MOUNTING CONFIGURATION



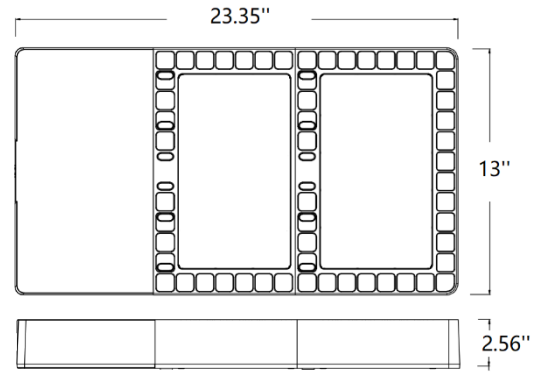
Dimensions:



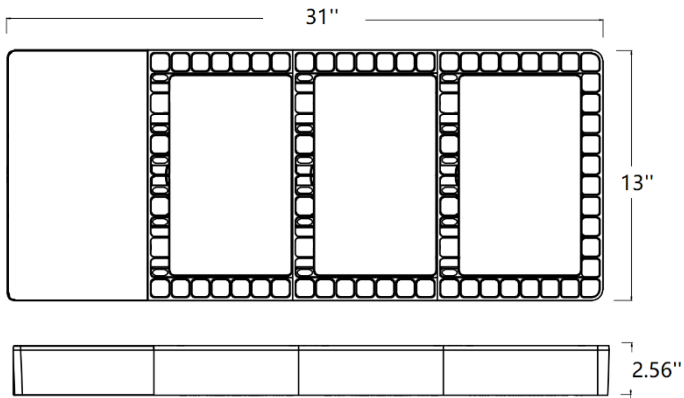
50W/80W



100W/120W/150W



200W/300W



400W/500W